

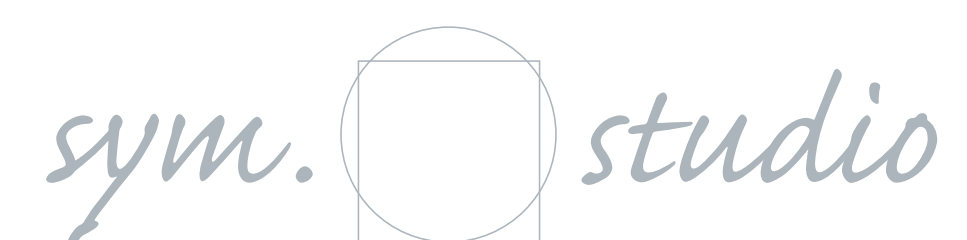
project
GLENDALE SHOPPING CENTRE UPGRADE
LANDSCAPE DESIGN REPORT

Issue date: 10/06/15

prepared for
STOCKLAND
Level 25, 133 Castlereagh St
Sydney NSW 2000



prepared by
SYM STUDIO



GLENDALE

Shopping Centre Upgrade

{LAKE MACQUARIE}

*"Some of my fondest
childhood memories
are of fishing on
Lake Macquarie...
I recommend that
you re-discover
simple pleasures
with your children
and take a rowing
boat out on the lake
and throw in a line"*
{unknown}

*With some prawns
(for the fish) and
a picnic (for you)
you will have a
wonderful day that
you and your
children will
remember for years.*
{Maxie, Heathcote}

*"I remember how
excited my sister and
I used to be when we
caught flathead
and whiting from
our boat and once
we even caught a
rather large crab"*
{unknown}

What's your
favourite
fishing story?

Glendale Shopping Centre

Landscape Development Application Package

DOCUMENT LOG

Contents	Drawing No.	Issue Date
Coversheet	-	10/06/15
Plant Schedule	STK13-SK-01	10/06/15
Site Analysis & Cultural Interpretation	STK13-SK-02	10/06/15
Placemaking Strategy	STK13-SK-03	10/06/15
Landscape Analysis & Design Strategy	STK13-SK-04	10/06/15
Landscape Masterplan - Overall	STK13-DA-L01	10/06/15
Landscape Masterplan - Core Area - 1 of 3	STK13-DA-L02	10/06/15
Landscape Masterplan - Core Area - 2 of 3	STK13-DA-L03	10/06/15
Landscape Masterplan - Core Area - 3 of 3	STK13-DA-L04	10/06/15
Landscape Detail Plan - Pedestrian Meet Point, Eastern	STK13-DA-L05	10/06/15
Landscape Detail Plan - Shareway	STK13-DA-L06	10/06/15
Landscape Detail Plan - Pedestrian Meet Point, Western	STK13-DA-L07	10/06/15

SITE LOCATION MAPS



ROUNABOUT & ENTRY PLANTING (Total Area = 300m2)				
Abb.	BOTANICAL NAME	COMMON NAME	POT SIZE	SPACING
SHRUBS				
Alp zer	Alpinia zerumbet	Shell Ginger	300mm	2/m2
Vib oda	Viburnum odoratissimum	Sweet Viburnum	300mm	1/m2
GROUNDCOVERS				
Dia cae	Dianella caerulea var. products	Blue Flax Lily	V/cell	3/m2
Fac nod	Facinia nodosa	Knobby Club Rush	V/cell	5/m2
Jun con	Juniperus conferta	Shore Juniper	140mm	2/m2

PARKING ISLAND PLANTING (Total Area = 2985m2)				
Abb.	BOTANICAL NAME	COMMON NAME	POT SIZE	SPACING
SHRUBS				
Alp zer	Alpinia zerumbet	Shell Ginger	200mm	2p/m2
Dor yan	Doryanthes excelsa	Gymea Lily	300mm	2p/m2
Gre ser	Grevillea sericea	Pink Spider Flower	200mm	1p/m2
Vib oda	Viburnum odoratissimum	Sweet Viburnum	300mm	1p/m2
Wes fru	Westringia fruticosa 'Smokey'	Smokey Coast Rosemary	200mm	2p/m2
GROUNDCOVERS				
Jun con	Juniperus conferta	Shore Juniper	140mm	2p/m2

PEDESTRIAN 'MEETING POINT' PLANTING (Total Area = 205m2)				
Abb.	BOTANICAL NAME	COMMON NAME	POT SIZE	SPACING
SHRUBS				
Alp zer	Alpinia zerumbet	Shell Ginger	300mm	2p/m2
Gre ser	Grevillea sericea	Pink Spider Flower	200mm	1p/m2
Mac com	Macrozamia communis	Burrawang Cycad	400mm	1p/3m2
GROUNDCOVERS				
Ble car	Blechnum cartilagineum	Gristle Fern	200mm	5p/m2
Gar rad	Gardenia radicans	Prostrate Gardenia	200mm	5p/m2
Hib mos	Hibiscus moscheutos spp.	Dwarf Hibiscus	200mm	2p/m2
LIR mus	Liriope muscari 'Evergreen Giant'	Evergreen Giant	200mm	4p/m2

RAISED PLANTER BOXES 'DINING' (Total Area = 185m2)				
Abb.	BOTANICAL NAME	COMMON NAME	POT SIZE	SPACING
SHRUBS				
Syz aus	Syzygium australe 'Tiny Trev'	Dwarf Lilly Pilly	300mm	2p/m2
Rha ind	Rhaphiolepis indica 'Oriental Pearl'	Indian Hawthorn	300mm	3p/m2
GROUNDCOVERS				
Aju rep	Ajuga reptans	Blue Bugle	140mm	8p/m2
Fac nod	Facinia nodosa	Knobby Club Rush	tubestock	5p/m2
Gar rad	Gardenia radicans	Prostrate Gardenia	140mm	5p/m2
Jun sab	Juniper sabina	Savin Juniper	140mm	2p/m2

TREE PIT PLANTING (Total Area = 123m2)				
Abb.	BOTANICAL NAME	COMMON NAME	POT SIZE	SPACING
GROUNDCOVERS				
Fac nod	Facinia nodosa	Knobby Club Rush	tubestock	5p/m2
Jun con	Juniperus conferta	Shore Juniper	140mm	2p/m2
Myo par	Myoporum parvifolium	Creeping Boobialla	140mm	3p/m2

OPEN SPACE PLANTING (Total Area = 450m2)				
Abb.	BOTANICAL NAME	COMMON NAME	POT SIZE	SPACING
SHRUBS				
Pen alo	Pennisetum alopecuroides 'Nafray'	Swamp Foxtail	V/cell	3p/m2
Wes fru	Westringia fruticosa 'Smokey'	Smokey Coast Rosemary	140mm	2p/m2
GROUNDCOVERS				
Dia cae	Dianella caerulea var. profensa	Blue Flax Lily	V/cell	3p/m2
Fac nod	Facinia nodosa	Knobby Club Rush	V/cell	5p/m2
Myo par	Myoporum parvifolium	Creeping Boobialla	V/cell	3p/m2
Tra jas	Trachelospermum jasminoides	Star Jasmine	tubestock	1p/m2

REVEGETATION PLANTING (Total Area = 3455m2)				
STOCKLAND DRIVE EXTENSION (Total Area = 1350m2)				
Abb.	BOTANICAL NAME	COMMON NAME	POT SIZE	SPACING
SHRUBS				
Aca lon	Acacia longifolia	Golden Wattle	forest tube	2p/5m2
Not lon	Notelaea longifolia forma longifolia	Mock Olive	forest tube	2p/5m2
Bre obl	Breynia oblongifolia	Coffee Bush	forest tube	2p/5m2
GROUNDCOVERS				
Dia cae	Dianella caerulea var. profensa	Blue Flax Lily	V/cell	3p/m2
Hib sca	Hibbertia scandens	Golden Guinea Flower	140mm	2p/5m2
Lom lon	Lomandra longifolia	Mat Rush	V/cell	5p/m2
Myo par	Myoporum parvifolium	Creeping Boobialla	forest tube	3p/m2

STREET TREES				
Abb.	BOTANICAL NAME	COMMON NAME	POT SIZE	QTY
TREES				
	Backhousia citriodora	Lemon Scented Myrtle	100Lt	24
	Buckinghamia celssissima	Ivory Curl Tree	100Lt	29
	Elaeocarpus reticulatus	Blueberry Ash	45Lt	15
	Ficus lyrata	Fiddle Leaf Fig	75Lt	10
	Fraxinus griffithii	Flowering Ash	400Lt	6
	Liriodendron tulipifera fastigiata	Tulip Tree	200Lt	16
	Livistona australis	Cabbage Palm	400Lt	6
	Prunus cerasifera 'Nigra'	Black Plum	75L	5
	Pyrus calleryana 'Bradford'	Callery Pear	200Lt	31
	Tristaniaopsis laurina	Water Gum	100L	101
	Waterhousia floribunda	Weeping Lilly Pilly	75L	59

REPLACEMENT/REVEGETATION TREES				
Abb.	BOTANICAL NAME	COMMON NAME	POT SIZE	QTY
REVEGETATION PLANTING (along South-Western Boundary) Total Area = 3455m2				
Acm smi	Acmena smithii	Lilly Pilly	25Lt	1p/30m2
Ban ser	Banksia serrata	Serrated Banksia	forest tube	1p/30m2
Ang cos	Angophora costata	Smooth-barked Apple	25Lt	54
Cor cit	Corymbia gummifera	Red Bloodwood	25Lt	54
Cor mac	Corymbia maculata	Spotted Gum	25Lt	54
REPLACEMENT PLANTING (along South-Western Boundary)				
Ang cos	Angophora costata	Smooth-barked Apple	25Lt	TBC refer Tree Replacement Strategy DA-L01
Cor mac	Corymbia maculata	Spotted Gum	25Lt	" "
ELA ret	Elaeocarpus reticulatus		75L	" "
POD ela	Podocarpus elatus		75L	" "
TREES (in Stockland Drive Extension only) Total Area = 1350m2				
Cer gum	Ceratopetalum gummiferum	NSW Christmas Bush	25Lt	1p/30m2
Hym fla	Hymenosporum flavum	Native Frangipanni	5Lt	1p/30m2

NOTE: SPACING SHOWN FOR SHRUBS AND GROUNDCOVER REFLECT A MINIMUM DENSITY. FINAL QUANTITIES REQUIRED FOR CONSTRUCITON CERTIFICATE PLANTING PLAN.

Plant Schedules



GLENDALE SHOPPING CENTRE
387 Lake Road
Glendale NSW

Planting Schedule

sym. *studio*
Mona Vale NSW 2103
Australia +61 2 9918 7119
projects@symstudio.net
www.symstudio.com

Project: STK13Glendale
Client: Stockland
Stage: Development Application
Prepared By: CG/MCG
Issue: Council Review
Date: 10th June 2015

EXISTING SITE



Existing Aerial Photograph



Panorama - Core Parking Area (west)



Panorama - Existing Stormwater Detention Basin from carpark



Panorama - Existing Stormwater Detention Basin (east opposite cinema)



Existing Site - View looking south from Kmart



Existing Site - Core Area Carpark (Trees)



Existing Site - Core Area Carpark (Water Ponding)



Existing Site - Street Furniture 1



Existing Site - Street Furniture 2



Existing Site - Carpark Detention (south)



Existing Site - Viburnum odoratissimum



Existing Site - Viburnum tinus



Existing Site - Photinia robusta

HISTORIC INTERPRETATION

- Glendale Shopping Centre located near “The Crossroads” intersection has long been a natural junction for people travelling north-south and east-west of Lake Macquarie.
- Historically Glendale Shopping Centre was conceived as a north american style strip mall where car convenience dictated the layout of buildings and was dominated by parking and vehicular accessways.
- Glendale has become a very popular regional shopping centre which has undergone expansion since its inception in 1994.
- The current proposal to rearrange the vast area of carparking to accommodate new specialty stores, creates a great opportunity to create a meaningful streetscape and outdoor experience which serves to reinvigorate the shopping centre and reinforces the tradition that Glendale is a preferred meeting point of convenience, with a strong

GLENDALE, N.S.W.

Diagram - Glendale 1952



The Crossroads 'Central Water Trough' Date: unknown



Lake Macquarie from Rocky Point looking east towards Pulbah Island and to the left Swansea, circa: 1955



Cleaning and washing the fish catch always attracts a crowd - Ken Harrison and David Micallef at Mannering Park Coop Wharf, circa: 1995



Aerial View of The Crossroads, Date: 1971



Emphasise emotional connection to Lake Macquarie



Lake Macquarie



Precedence Image - Green Screen



Precedence Image - Timber Portals



Precedence Image - Carpark Arbor



Precedence Image - Arbor



Precedence Image - Fishing Pole Sculpture



Precedence Image-Foodcourt Water Microclimate



Precedence Image - Raised Rest Platform



Precedence Image - Fish Species Etching



Precedence Image - Storytelling Sculpture



Precedence Image - Meeting Point.t.s.



Existing Site - Street Furniture 2



Stockland Forster - Interactive Sculpture



Precedence Images - Sculptural Artwork



Precedence Image - 'Bookend' Plaza



Precedence Image - Streetscape



GLENDALE SHOPPING CENTRE
387 Lake Road
Glendale NSW

Site Analysis & Cultural Interpretation



Mona Vale NSW 2103
Australia +61 2 9918 7119
projects@symstudio.net
www.symstudio.com

Project: STK13Glendale
Client: Stockland
Stage: Development Application
Prepared By: CG/MCG
Issue: Council Review
Date: 10th June 2015

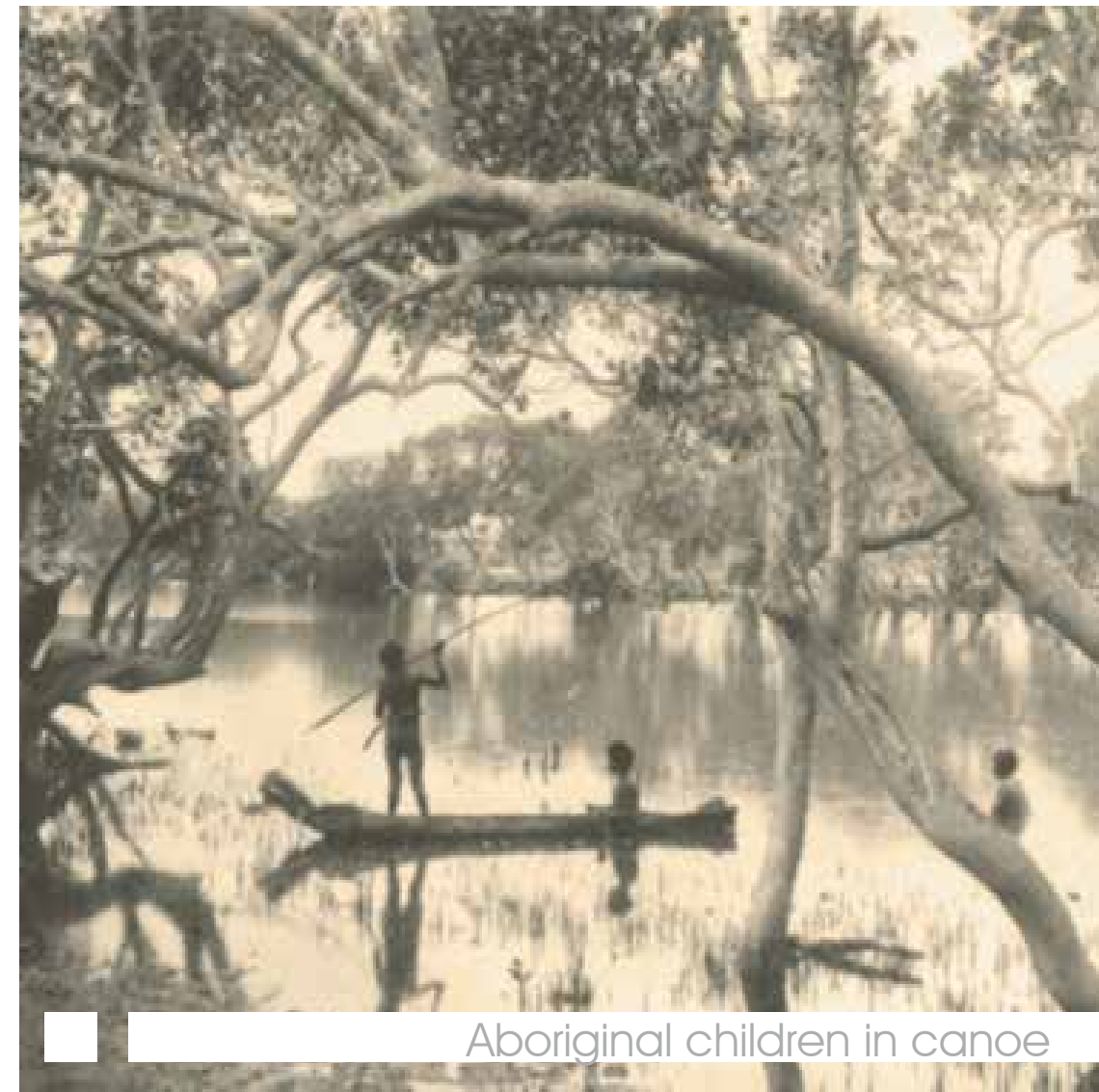
SK - 02

SITE CONTEXT

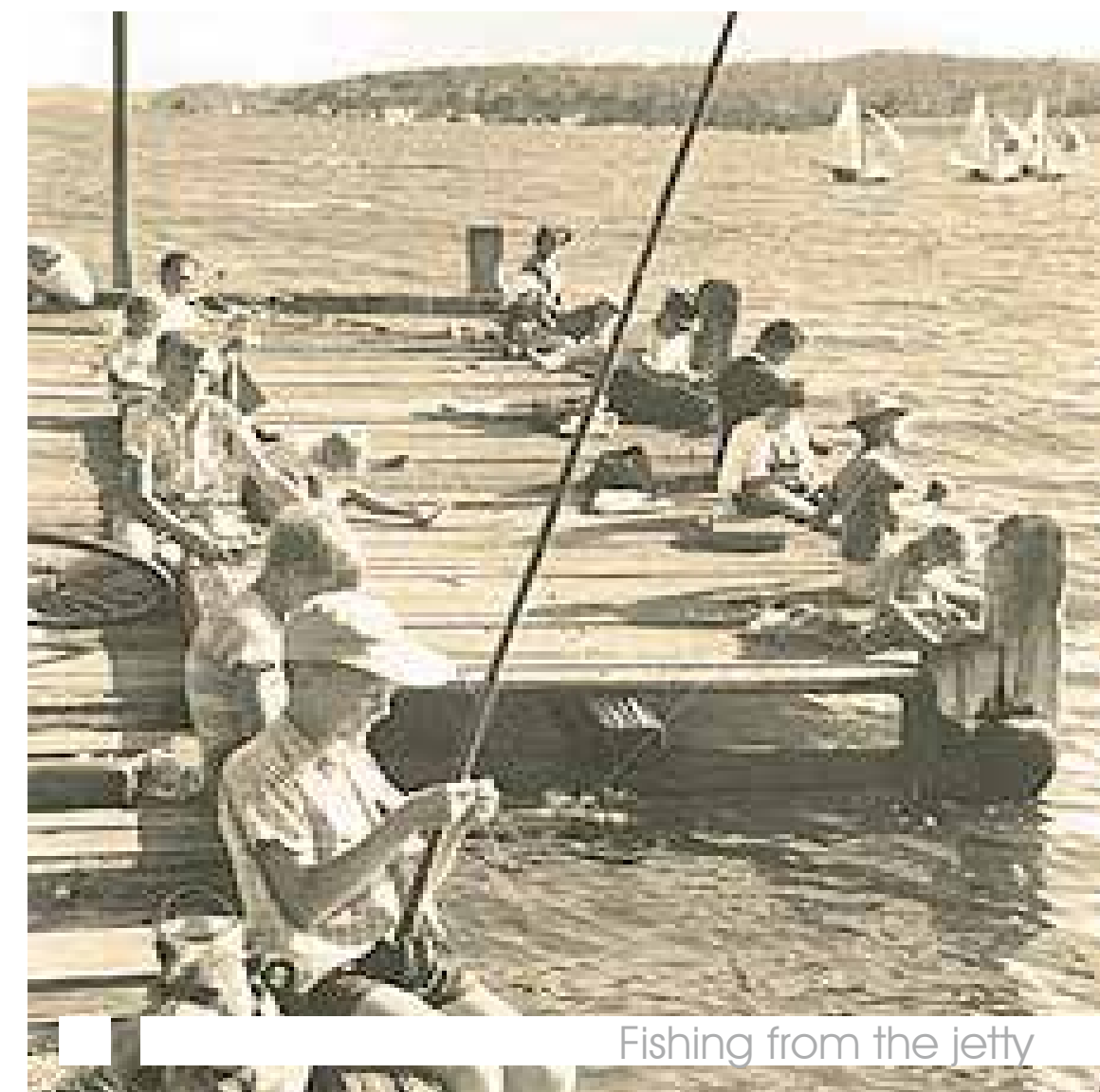
A lifestyle choice
Lake Macquarie (Awaba)
Meaning; plain or calm surface
Long-standing fishing history
Coastal salt water lake
Sand banks, rocks, boats & jetties
Seasonal variety of fish



Children fishing



Aboriginal children in canoe



Fishing from the jetty

STILL LAKE

The lake so still!
with reflected sleeping blue hills...
a cloud
floats in the heart of the lake
small circle of fine lines on the water
is it the whisper of a breeze?
or the listening fish?
{Poem by Yu Ouyang}

A PROCESS

Early rise, calm waters
Prepare the gear and tackle
Select the right location
Set the hook and cast the line
Wait, watch, hope, contemplate
Ripples on the water's surface
The exciting nibble



Setting out on the boat



Fishing tackle box



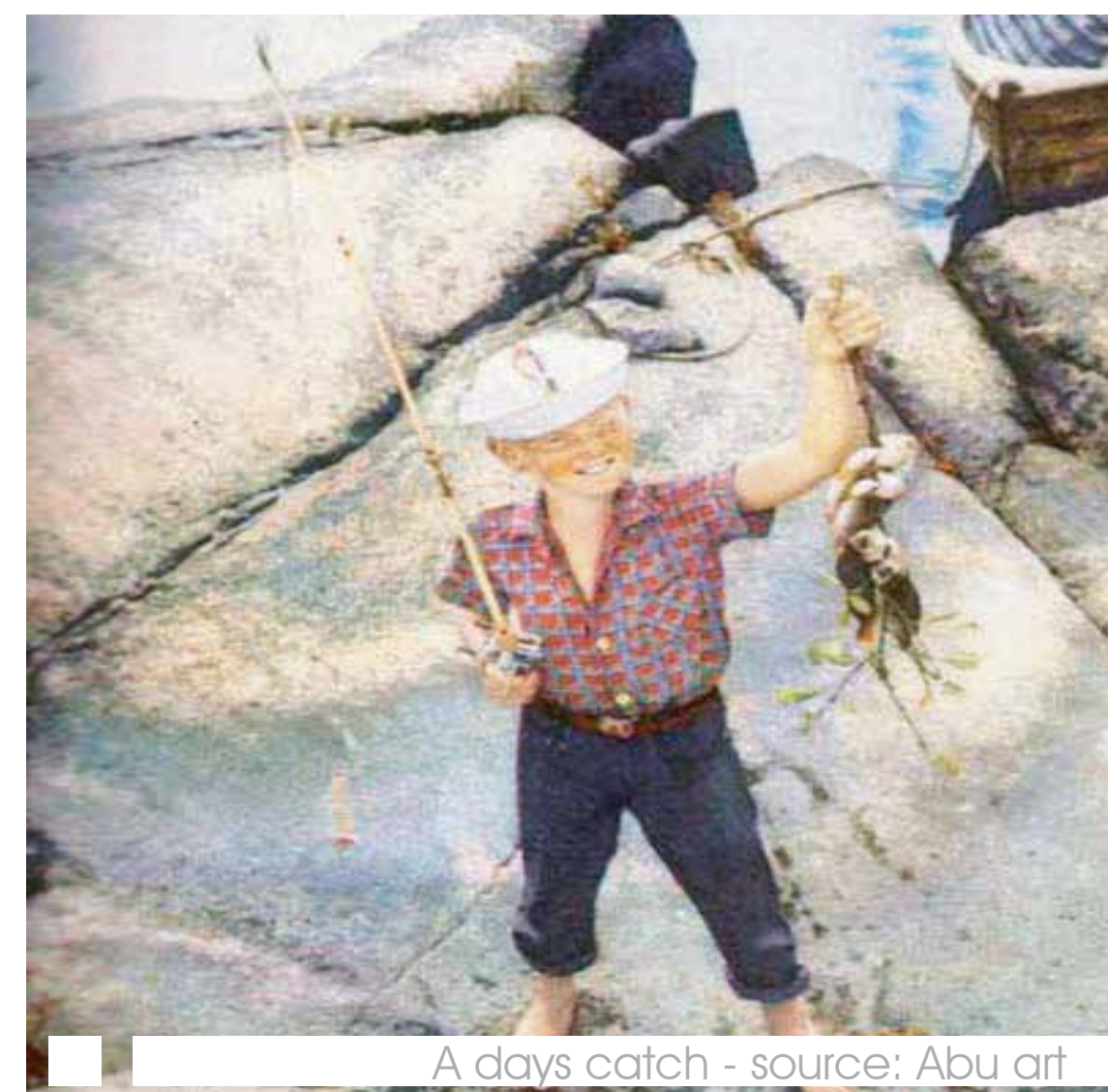
Waiting for a bite

REFLECTION

"We used a cord type of line.
You had to buy it.
It wasn't like today's fishing line.
We used old car bolts and
things like that for sinkers.
And we'd get the corks off
wine bottles to use as our floats."
{Joyce Hampton, Darling River}

THE STORY

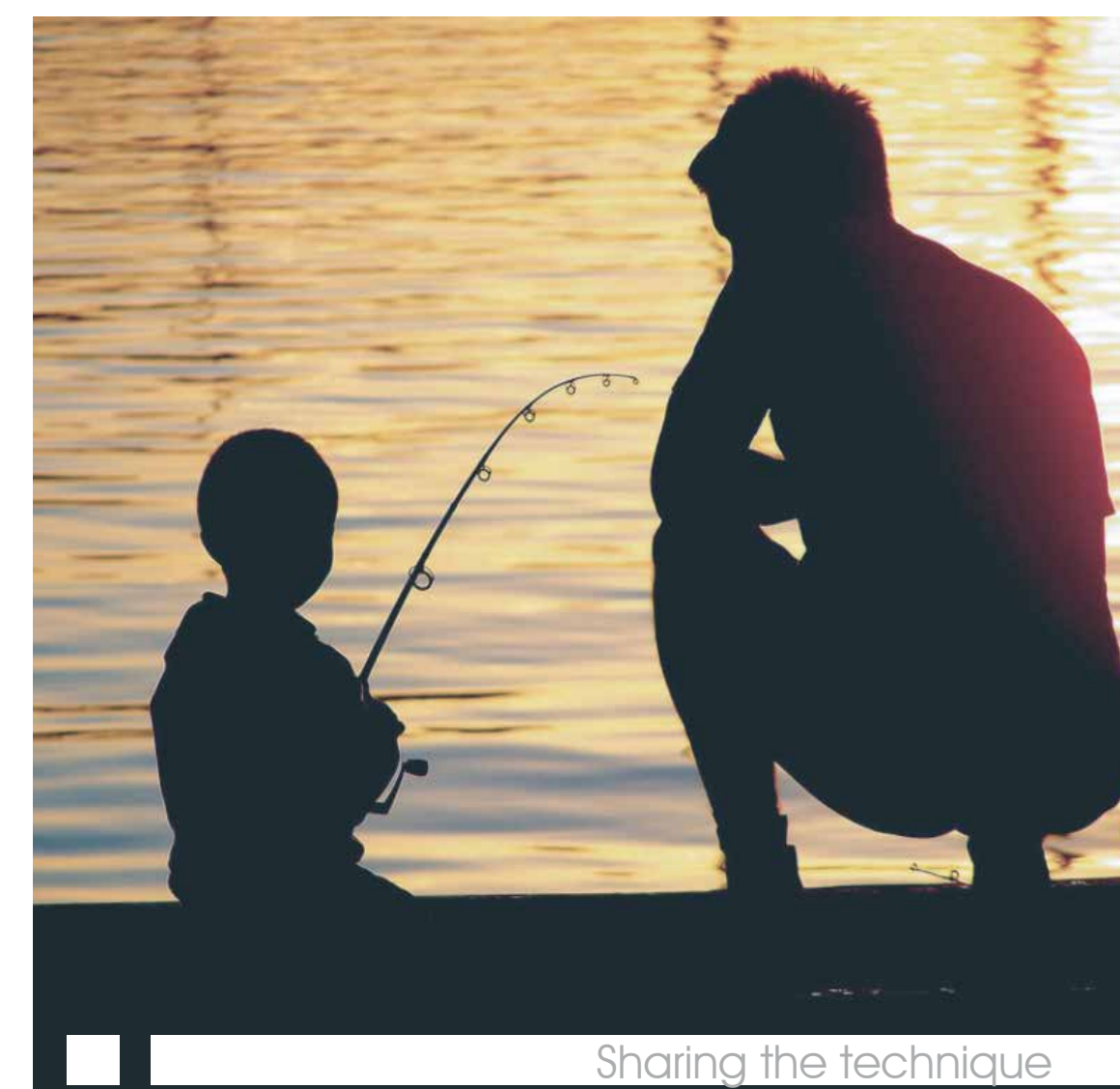
Thrill of the catch
Reeling it in
Sizing it up
Telling the tale
Sharing the technique
Generation to generation



A day's catch - source: Abu art



Telling the story



Sharing the technique

PASSING KNOWLEDGE

"This workshop teaches...
fishing and water safety;
conservation of fish habitats;
cleaning your catch;
knot tying; line rigging and
baiting; casting techniques
and retrieval of fish;
rules and regulations;
and Aboriginal culture."
{George Mannah, NSW DPI Fisheries}



Stockland

GLENDALE SHOPPING CENTRE
387 Lake Road
Glendale NSW

Place Making Strategy

sym. studio

Mona Vale NSW 2103
Australia +61 2 9918 7119
projects@symstudio.net
www.symstudio.com

Project: STK13Glendale
Client: Stockland
Stage: Development Application
Prepared By: CG/MCG
Issue: Council Review
Date: 10th June 2015

SK - 03

● Unknown species
● Ficus spp.
● Lophostemon confertus - Brush Box
● Melaleuca quinquenervia - Broad-leaved Paperbark

For detailed and more extensive tree analysis refer Arborists Report (Treeology, dated 13/11/13)

The map illustrates the vehicle circulation and entry nodes for the University of Michigan Medical Center campus. The legend identifies the following elements:

- Primary Vehicle Circulation:** Represented by a dark blue line.
- Secondary Vehicle Circulation:** Represented by a light blue line.
- Tertiary Vehicle Circulation:** Represented by a brown line.
- Primary Vehicular Entry Node:** Represented by a dark blue asterisk.
- Secondary Vehicular Entry Node:** Represented by a light blue asterisk.
- Tertiary Vehicular Entry Node:** Represented by a brown asterisk.

The map shows the campus layout with various parking lots and building footprints. The circulation routes are overlaid on the map, showing the flow of traffic. The Primary Vehicle Circulation route (dark blue) starts at a Primary Vehicular Entry Node (dark blue asterisk) on the left, moves right, and then splits into two parallel routes that run horizontally across the middle of the campus. The Secondary Vehicle Circulation route (light blue) follows a similar path but is slightly offset from the Primary route. The Tertiary Vehicle Circulation route (brown) forms a large loop around the perimeter of the campus, starting and ending at a Tertiary Vehicular Entry Node (brown asterisk) at the bottom left. Other entry nodes are located at various points along the routes, including a Secondary Vehicular Entry Node (light blue asterisk) on the left and a Primary Vehicular Entry Node (dark blue asterisk) on the right.

The map illustrates the pedestrian network at the University of Illinois at Chicago. The legend identifies the following elements:

- Primary Pedestrian Circulation:** Represented by a dark blue dashed line, forming a large rectangular loop around the central campus area.
- Secondary Pedestrian Circulation:** Represented by a yellow dashed line, following a path along the western and southern edges of the main campus loop.
- Tertiary Pedestrian Circulation:** Represented by a red dashed line, showing internal paths within the central campus area.
- Primary Pedestrian Activity Node:** Indicated by dark blue starburst symbols, located at key intersections and building entrances.
- Secondary Pedestrian Activity Node:** Indicated by yellow starburst symbols, located at major entry points along the secondary circulation route.
- Tertiary Pedestrian Activity Node:** Indicated by red starburst symbols, located at various points within the tertiary circulation network.

The map shows a complex network of paths connecting various campus buildings, parking lots, and transit stations, with the primary circulation route providing the main structural framework.



Landscape Analysis & Design Strategy

SK - 04

Landscape Legend

- 1 Existing Stockland Funland
- 2 New updated Streetscape Spine
- 3 New Primary Pedestrian Connection
- 4 New Primary Pedestrian Boulevard Axis
- 5 Integrated 'Green Screen' & Lifestyle Signage
- 6 New Tertiary Pedestrian Access Point
- 7 Upgraded Secondary Pedestrian Meeting Point (west)
- 8 Upgraded Pedestrian Meeting Point (east)
- 9 Existing Pedestrian Access Spine
- 10 Retain Existing Trees
- 11 Selective Carpark Canopy Tree Replacement
- 12 Upgraded Open Space Lawn 'Safer by Design'
- 13 Existing Tree Removal (refer arborist report)

Tree & Materials Legend

- Planting (Existing)
- Planting (Proposed)
- Revegetation Planting
- Hardscape (Existing)
- Hardscape (Proposed)
- Dining Areas
- Backhousia citriodora
- Prunus nigra
- Pyrus calleryana 'Bradford'
- Tristanopsis laurina
- Waterhousia floribunda
- Fraxinus griffithii
- Ficus lyrata
- Buckinghamia celsissima
- Liriodendron tulipifera fastigiata
- Elaeocarpus reticulatus
- Livistona australis
- Existing Trees to be retained
- Native Revegetation Planting

Refer Arboricultural Impact Report (Treeology, 20.03.15)

Tree Calculations	
No. of existing trees	265
No. of existing trees to be retained	58
No. of proposed trees	278
No. of new trees in hardscape area (requiring tree vaults)	233

Tree Removal Strategy:
1. Existing trees are predominantly canopy trees as representative in Arboricultural Impact Report (Treeology, 20/03/15).
2. Tree removal will be determined by arborist on an individual tree basis at time of construction certificate.

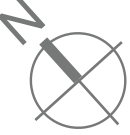
Tree Replacement Strategy:
1. Where tree removal is required for mature (>20years), replacement trees will be installed at a ratio of 2:1.
2. Where tree removal is required for mature (<20years), replacement trees will be installed at a ratio of 1:3.

The rationale for determining species type is based on providing a more effective vegetation screen than currently exists. This will be achieved using a combination of mid-storey rainforest species and canopy species. This approach will utilise foliage from ground level to the underside of the existing/replacement tree canopy.

(For species refer Planting Schedule 'Replacement Trees' DA-SK-01.)



1 Overall Upgrade Area
1:2000@A1



GLENDALE SHOPPING CENTRE
387 Lake Road
Glendale NSW

Landscape Masterplan - Overall



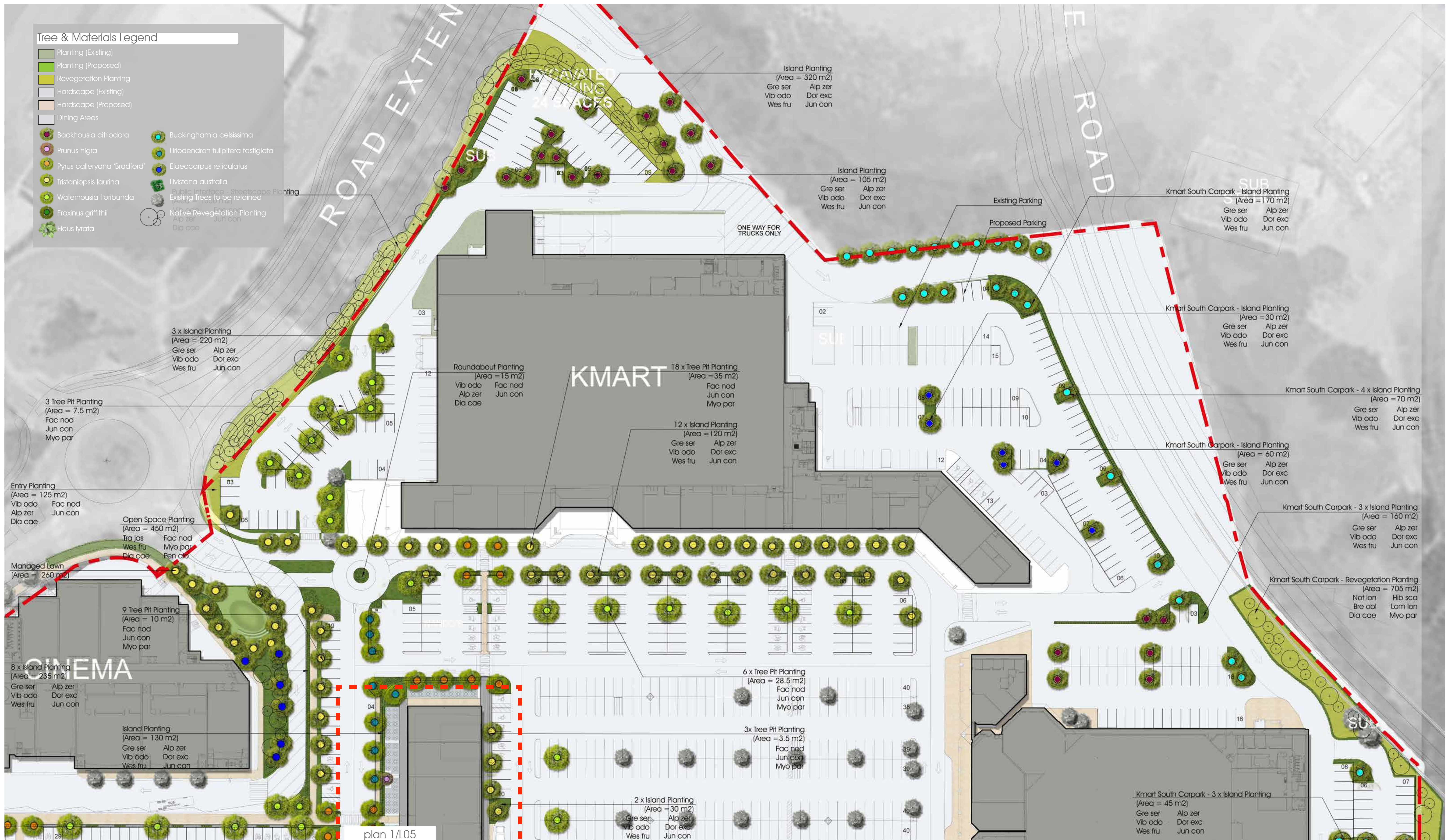
Mona Vale NSW 2103
Australia +61 2 9918 7119
projects@symstudio.net
www.symstudio.com

Project: STK13Glendale
Client: Stockland
Stage: Development Application
Prepared By: CG/MCG
Issue: Council Review
Date: 10th June 2015

DA- L01

Tree & Materials Legend

- Planting (Existing)
- Planting (Proposed)
- Revegetation Planting
- Hardscape (Existing)
- Hardscape (Proposed)
- Dining Areas
- Backhouisia citriflora
- Prunus nigra
- Pyrus calleryana 'Bradford'
- Tristanopsis laurina
- Waterhouisia floribunda
- Fraxinus griffithii
- Ficus lyrata
- Buckinghamia celsissima
- Liriodendron tulipifera fastigiata
- Elaeocarpus reticulatus
- Livistona australis
- Public Interface - Streetscape Planting
- Existing Trees to be retained
- Native Revegetation Planting
- Alp zer
- Dia cae



plan 1/L05

Core Upgrade Area - Plan 1

1:1000@A1



GLENDALE SHOPPING CENTRE
387 Lake Road
Glendale NSW

Landscape Masterplan - Core Area Plan
Sheet 1 of 3

sym. studio

Mona Vale NSW 2103
Australia +61 2 9918 7119
projects@symstudio.net
www.symstudio.com

Project: STK13Glendale
Client: Stockland
Stage: Development Application
Prepared By: CG/MCG
Issue: Council Review
Date: 10th June 2015

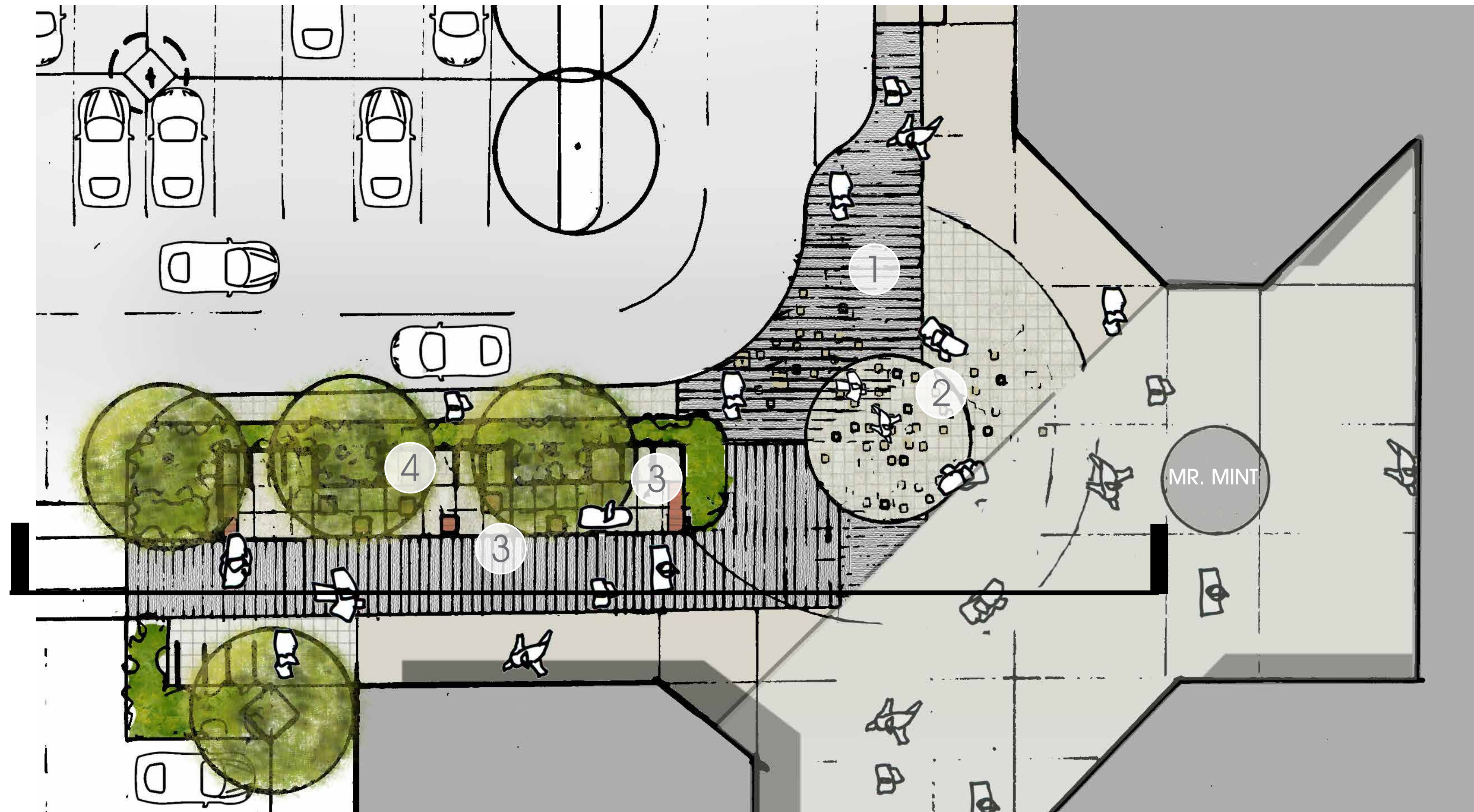
DA- L02



1 Core Upgrade Area - Plan 2
1:1000@A1



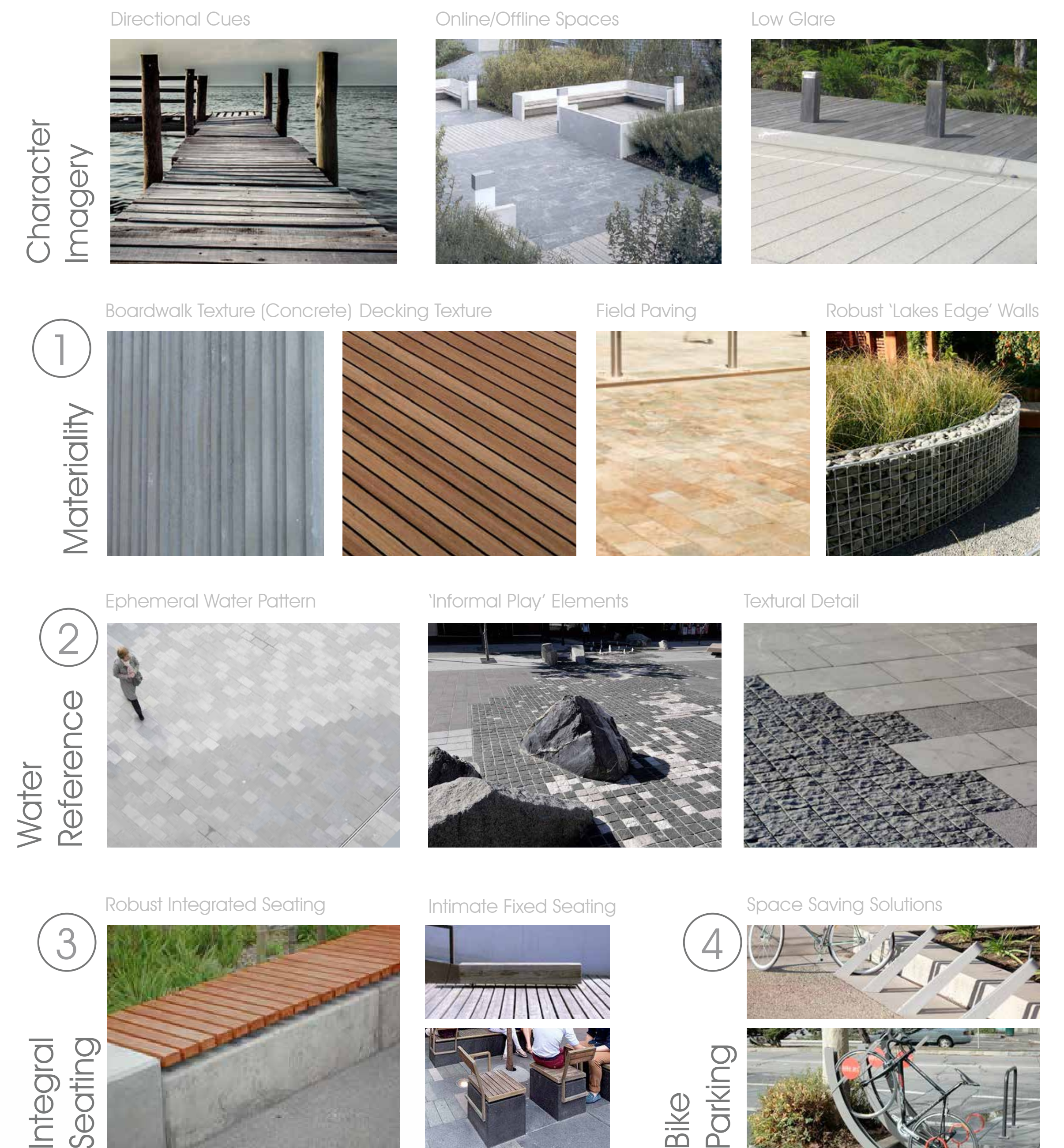
1 Core Upgrade Area - Plan 3
1:1000@A1



1 Detail Plan - Pedestrian Meeting Point, Eastern
1:100@A1

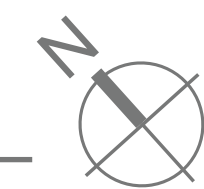


2 Elevation - Pedestrian Meeting Point, Eastern
NTS





1 Detail Plan - Shareway
1:100@A1



Character
Imagery

Directional Cues



Online/Offline Spaces

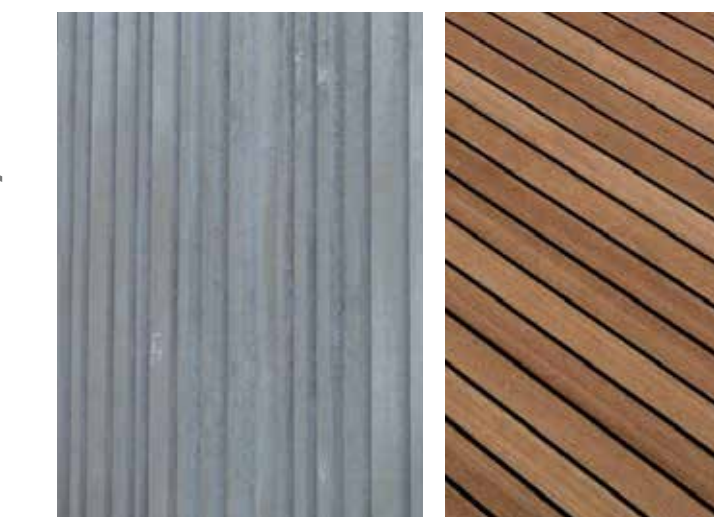


Low Glare



1
Materiality

Concrete (Boardwalk) Decking Texture



Field Paving



2
Raised
Planters

Raised Planters



Robust 'Lakes Edge' Walls



3
Integral
Seating

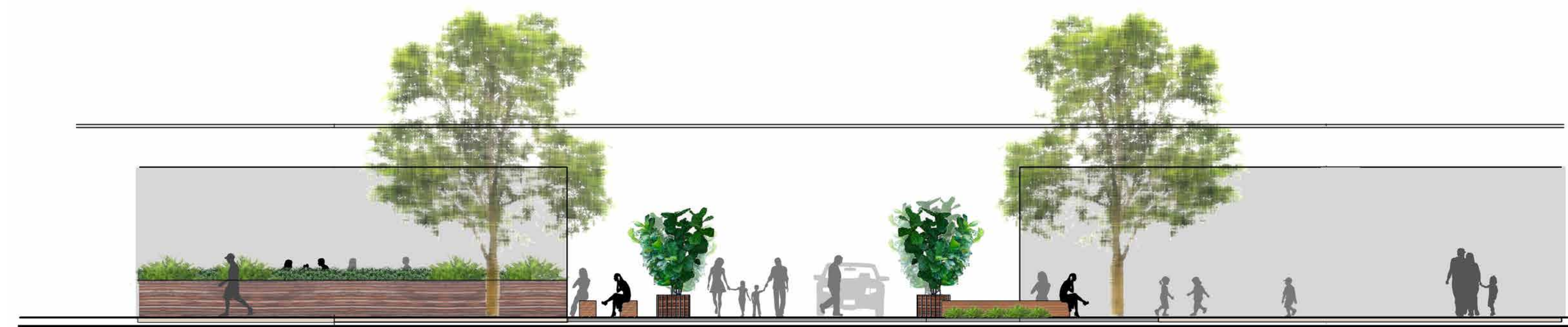
24 hour 8-80 Demographic



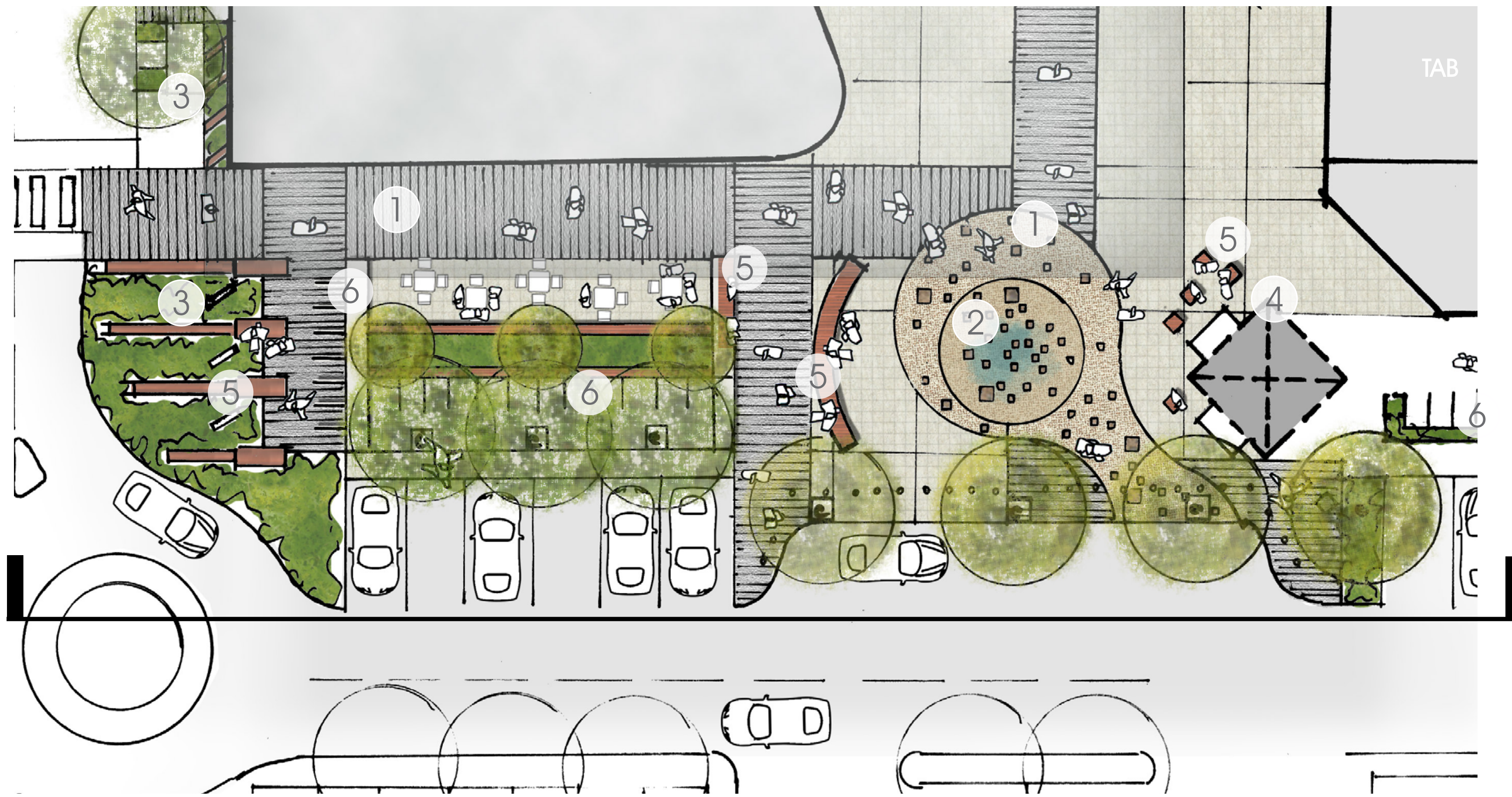
Robust Integrated Seating



Intimate Fixed Seating



2 Elevation - Shareway
NTS



1 Detail Plan - Pedestrian Meeting Point, Western
1:100@A1



2 Elevation - Pedestrian Meeting Point, Western
NTS

